



MONTHLY MEMBERSHIP PROGRESS REPORT

District 324A1

Results as of: 06/30/2019

GMT: N S SANKAR

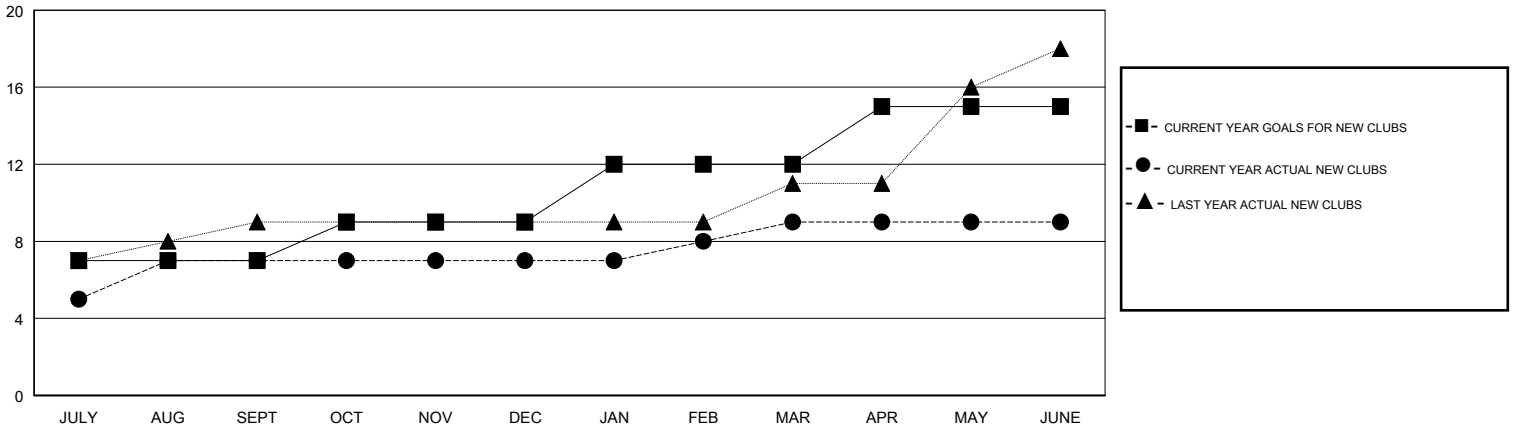
LOCATION INDIA

GMT CA

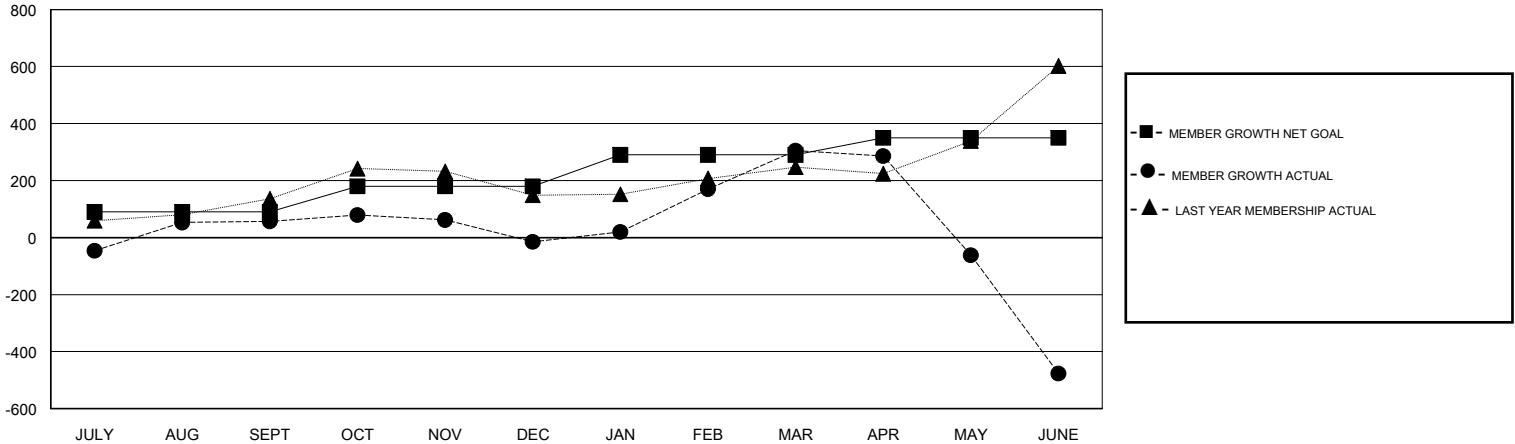
Clubs			
RESULTS FOR 2018-2019			
QUARTER	NEW CLUB GOAL	NEW CLUBS	DROPPED CLUBS
JULY/AUG/SEPT	7	7	0
OCT/NOV/DEC	2	0	0
JAN/FEB/MAR	3	2	1
APR/MAY/JUNE	3	0	4

Members			
RESULTS FOR 2018-2019			
QUARTER	MEMBER GROWTH NET GOAL	MEMBER GROWTH ACTUAL	DROPPED MEMBERS ACTUAL (including transfers)
JULY/AUG/SEPT	90	436	365
OCT/NOV/DEC	90	101	161
JAN/FEB/MAR	110	382	61
APR/MAY/JUNE	60	144	909

GOALS AND ACTUAL NEW CLUBS CUMULATIVE



GOALS AND ACTUAL MEMBERS CUMULATIVE



DROPPED CLUBS: 5	134 CLUBS OF 182 ADDED 1 OR MORE NEW MEMBERS	<u>GENDER DISTRIBUTION</u> MALE 4,084 (74.89%) FEMALE 1,369 (25.11%) Women Percentage Fiscal Year Goal: 20%
<u>DROPPED MEMBERS</u> DECEASED 10 CLUB CANCELLED 114 OTHER 1,372 TOTAL 1,496	CLICK HERE FOR CUMULATIVE MEMBERSHIP DATA	TOTAL FAMILY UNIT MEMBERS 1,718 FAMILY MEMBERS PAYING HALF DUES 928